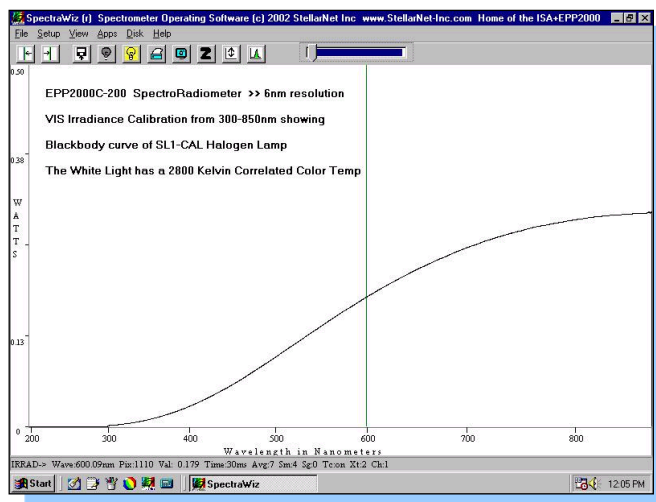


SL1 Tungsten Halogen Light Sources for VIS - NIR



- **350 nm-2200nm Spectral Range-** effective for color, reflectance, transmittance, and absorbance measurements
- **Extensive Life-** The SL1 has a 10,000 hour Tungsten Halogen lamp filled with Krypton gas
- **Great Compatibility/Versatility-** manipulate output with color-enhancing or signal-attenuating filters.
- **Small Footprint-** measures only 1.5" x 3" x 3.5"
- **Maximum Flexibility-** several models and options to choose from to meet all your application needs.

- **The SL1-CUV** adds a 1cm cuvette holder with integrated collimating lens. Dual purpose allows the collimating lens to be demounted for far field emission monitoring.
- **The SL1-FILTER** includes a 0.5" diameter filter holder nose cone. Customers can use a variety of filters for spectral attenuation, band pass, and more. Includes filter to improve blue sensitivity.
- **SL1-BAT** is a unique option that adds a jack to any SL1 so it can be powered from +5VDC. Users can achieve complete portability with the BP1 or BP2 battery pack for the spectrometer *and* the SL1-BAT.
- **SL1-CAL** is configured specifically for Irradiance calibrations (300-1100nm/300-1700nm). A USB drive is supplied with intensity data used to calibrate a SpectroRadiometer.



SL1 Tungsten Halogen Black Body Spectrum

SL1 Light Sources and Accessories

Item	Description	Price
SL1	SL1 Tungsten-Halogen light source	\$425
SL1-Filter	SL1 light source with filter holder nose and filter.	\$595
SL1-CUV	SL1 light source with integrated cuvette holder	\$655
SL1-CAL	SL1 light source with data file for 300-1100nm (300-1700nm available)	\$750
SL1-BAT	Optional connector allows +5V battery operation	\$50
SL1-BLUE	SL1 with 470nm Blue LED, replacing halogen bulb	\$375

Specifications

Weight	0.62 pounds (280 g)	Output to bulb	5VDC
Power consumption	12 Watts	Output regulation	0.2%
Spectral range	350 – 2200nm	Internal filter accessory	2" square filter slot
Time to stabilize output	1 min	External filter slot	SL1-Filter only
Power output	200 W/m ²	Bulb life	10,000+ hours
Optical color temperature	~2800K	Connector	SMA 905