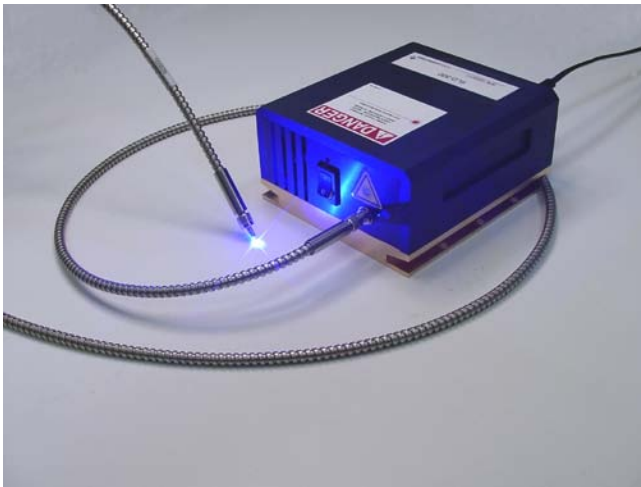


Grating Stabilized Diode Laser

GSDL-445-300

The GSDL-445-300 is a self contained turn-key laser system. It is a fiber coupled 445 nm diode laser with its spectrum stabilized on a single mode with a narrow linewidth of 0.002 nm. The output power is also stabilized at 300 mW. The power drift of less than 0.3 % over 8 hrs makes it an ideal laser for long term analytical measurements.

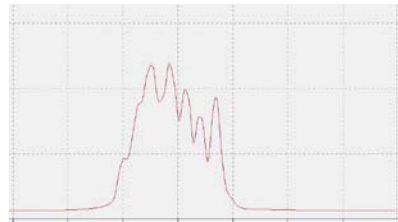


Applications

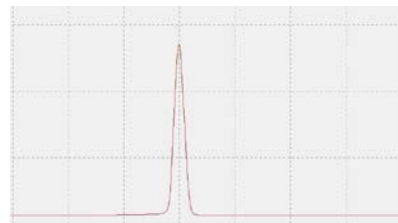
- Raman spectroscopy
- Fluorescence spectroscopy
- Flow cytometry
- Inspection
- Nonlinear microscopy
- Forensics

Preliminary Specifications

Wavelength:	445 nm
Linewidth:	0.002 nm
Output power:	300 mW
Power drift:	< 0.3 %
Fiber diameter:	200 microns
Output NA:	0.22
Polarization:	Vertical (w/o fiber)
Fiber cable length:	1.5 m
Operating temperature:	15-35 deg C
Power consumption:	< 20 W
Power requirement:	90-250 VAC
Dimensions:	60 mm (H) x 110 mm (W) x 130mm (L)
Weight:	1.3 kg



Spectrum of free running diode laser



Spectrum of GSDL-445-300

MicroMaterials, Inc.

13302 Telecom Dr., Tampa FL 33637

Phone: 813-971-2818 Fax: 813-971-2813

www.micromaterialsinc.com

micromaterials 