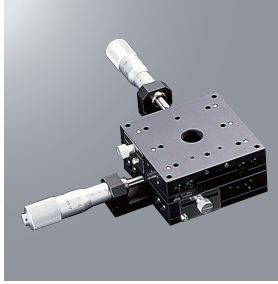
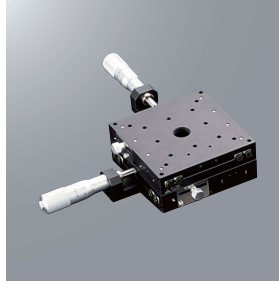


## XY-axis Cross Roller Guide Stage □80/□100/□120: B21-80/100/120

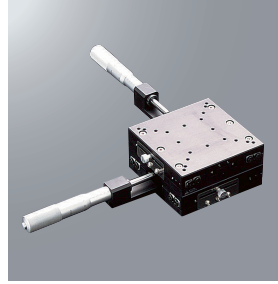
B21-80A



B21-100A



B21-120A

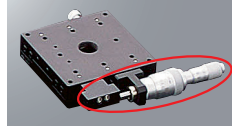


RoHS

**Optional sample** \*The photo is for illustrative purpose only.  
Please refer to optional introduction pages for details. [▶P.2-009~](#)

**Precise positioning**

Coarse-fine micrometer



※ Stroke is ±6.5mm.  
※ Not available □120.

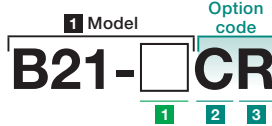
**[Features]**

- Table size □80 · 100 · 120mm cross roller guide stage XY-axis combination type.
- Main body is light weight by aluminum-made.
- Available each option.

**Configuration**

Model	B21-	80A	80C	100A	100C	120A	120C	Reference page
X,Y	B11-	80A	80C	100A	100C	120A	120C	<a href="#">▶P.2-065~</a>

\* R (opposite-hand) means configuration for X or Y axis of R.

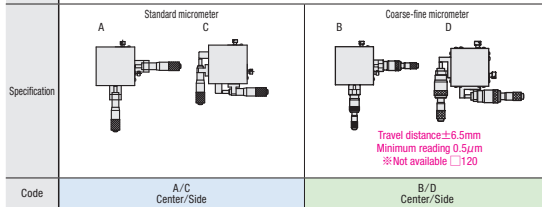


Select the option code as below.

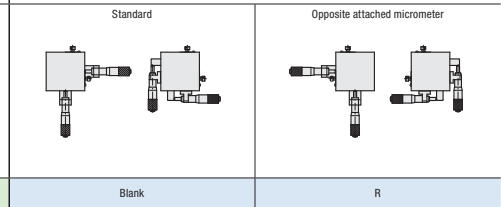
**1 Stage table size**

80	80×80mm
100	100×100mm
120	120×120mm

**2 Feeding position**



**3 Operating position**



**SPEC**

Model	B21-80A	B21-80C	B21-100A	B21-100C	B21-120A	B21-120C
	B21-80AR	B21-80CR	B21-100AR	B21-100CR	B21-120AR	B21-120CR
Stage table size	80×80mm		100×100mm		120×120mm	
Feeding Type	Standard micrometer					
Feeding position	Center	Side	Center	Side	Center	Side
Travel distance	±12.5mm				±25mm	
Minimum reading of micrometer	10μm/Scale					
Guide	Cross roller guide					
Load capacity	9.5kgf [93.1N]		14.3kgf [140.1N]		18.4kgf [180.3N]	
Travel accuracy	Straightness					
	Pitching					
	Yawing					
Allowable load for moment	Pitch		33.0N · m		57.2N · m	
	Yaw		30.0N · m		44.7N · m	
	Roll		33.0N · m		57.2N · m	
Moment rigidity	Pitch		0.11"/N · cm		0.04"/N · cm	
	Yaw		0.14"/N · cm		0.04"/N · cm	
	Roll		0.11"/N · cm		0.04"/N · cm	
Parallelism	Within 60μm					
Motion parallelism	Within 20μm					
Squareness	Within 10μm					
Weight	1.0kg		1.4kg		3.2kg	
Main material—Surface finishing	Aluminum—Black alumite processing					
Provided screws (Hex socket screws)	4 of M4—6				4 of M4—10	