

Horizontal Z-axis Cross Roller Guide: KHC06004/KHC07004/KS332

KHC06004F



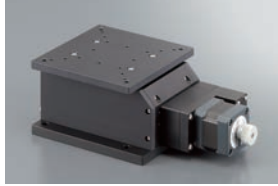
KHC07004F



KS332-8N

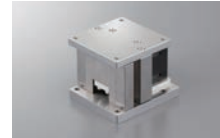


KS332-12



※ Can be used for KHC
 ▶ See page P.009

■ KHE series/ Low-price motorized horizontal Z stage
 ▶ P.1-113~



▶ Cable P.1-207~
 ▶ Electrical specification P.1-119~

1 Table size

06	60mm
07	70mm

2 Travel

04F	4mm
-----	-----

3 Travel

8N	8mm
12	12mm

4 Cable option

Code	Specification	Cable type
Blank	2m	D214-2-2E
1	2m One end loose	D214-2-2EK
2	4m	D214-2-4E
3	4m One end loose	D214-2-4EK
4	Only connector (Cable is not included)	—
5	Cable is not included (Standard)	—
6	Robot cable 2m	D214-2-2R
7	Robot cable 4m	D214-2-4R
8	Robot cable 4m one end loose	D214-2-4RK
9	Robot cable 2m one end loose	D214-2-2RK

* One end loose position to only stage opposite side.
 * If you choose the option specification, please add the difference to standard price.
 * See page ▶ P.1-207, 209~ for more cable details.
 * Please select "blank, 2, 6 and 7" when connect with stepping motor controller(DS102/112).

SPEC				
Model	KHC06004F	KHC07004F	KS332-8N-5	KS332-12-5
Mechanical specification	Travel length	4mm		8mm / 12mm
	Table size	60×60mm	70×70mm	80×100mm / 120×120mm
	Feed screw	Ball screwφ8 lead 1		Ball screwφ6 lead 1 / Ball screwφ8 lead 1
	Guide	Wedge type Crossed roller guide		
Main materials-Finishing	Aluminum—Black almite finishing	Aluminum—White almite finish	Aluminum—Black almite finishing	
	Weight	1.14kg	1.18kg	2.0kg / 3.6kg
Accuracy specification	Resolution (Pulse)	0.25μm (Full)/0.125μm (Half)		≈0.73μm (Full)/0.365μm (Half)
	MAX speed	2.5mm/sec		≈3.7mm/sec
	Uni-directional positioning accuracy	Within 7μm		—
	Repeatability positioning accuracy	Within ±0.5μm		
Load capacity	7kgf [68.6N]		20kgf [196N]	
	Moment stiffness	Pitch 0.2/yaw 0.04/roll 0.14 ["/N · cm]		Pitch 0.24/yaw 0.12/roll 0.03 ["/N · cm] / Pitch 0.20/yaw 0.11/roll 0.01 ["/N · cm]
Lost motion	Within 1μm			
	Parallelism			Within 50μm
Sensor	Limit sensor	Installed		
	Origin sensor	Installed		
	Slit origin sensor	Installed		
Provided screw (Hexagon-headed bolt)	4 of M4—12		4 of M4—16	4 of M6—16

*Selectable KH sensor logic.

X

XY

Z

Horizontal Z

XYZ

Goniometer

Rotary

Unit

Controller

Linear Ball

CAVE-X Linear ball

Cross Roller

Slide Guide

φ40

φ50

φ60

φ70

φ80

φ100

φ120

Other