

Motorized Stage

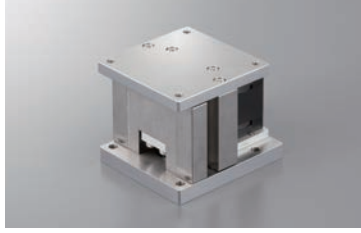
Horizontal Z-axis Stage: KHE04006-C/KHE06008-C(Linear ball guide)

Motorized Stage

KHE04006



KHE06008



RoHS

* The photo shows an image.
The holes and the shape may differ in certain respects from the actual product.

X

XY

Z

Horizontal Z

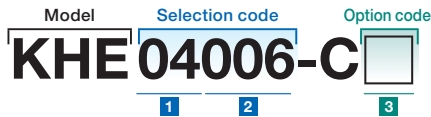
XYZ

Goniometer

Rotary

Unit

Controller



● Cable P.1-207~
● Electrical specification P.1-115~

1 Table size

04	□40mm
06	□60mm

2 Travel length

006	6mm
008	8mm

3 Cable option

Code	Specification	Cable type
F	Robot cable 2m	D214-2-2R
G	Robot cable 2m one end loose	D214-2-2RK
H	Robot cable 4m	D214-2-4R
J	Robot cable 4m one end loose	D214-2-4RK
Blank	Cable is not included (Standard)	—

* If you choose the option specification, please add the difference to standard price.

Electrical specification ● P.1-115~

* See page ● P.1-207, 209~ for more cable details.

* Please select "Code F or H" when connect with stepping motor controller(DS102/112).

Linear Ball

CAVE-X
Linear ball

Cross Roller

Slide Guide

φ40

φ50

φ60

φ70

φ80

φ100

φ120

Other

SPEC

Model	KHE04006-C	KHE06008-C
Travel length	6mm	8mm
Table size	40×40mm	60×60mm
Feed screw (Ball screw)	φ6 lead 1	φ8 lead 1
Guide	Linear ball guide	
Main materials-Finishing	Steel—Opposite side of the end face finishing	
Weight	0.5kg	0.92kg
Resolution (Pulse)	2μm (Full)/1μm (Half)	
MAX speed	10mm/sec	
Positioning accuracy	—	
Repeatability positioning accuracy	Within ±5μm	
Load capacity	3kgf [29N]	4kgf [39N]
Lost motion	Within 5μm	
Parallelism	Within 80μm	
Limit sensor	Installed	
Origin sensor	Installed	
Provided screw (Hexagon-headed bolt)	3 of M3—16	4 of M4—14