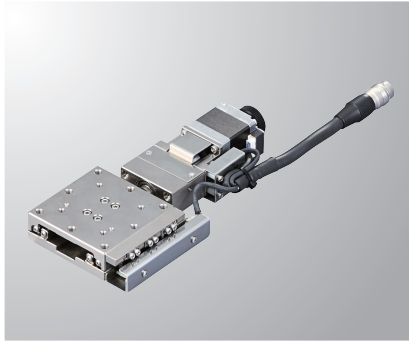
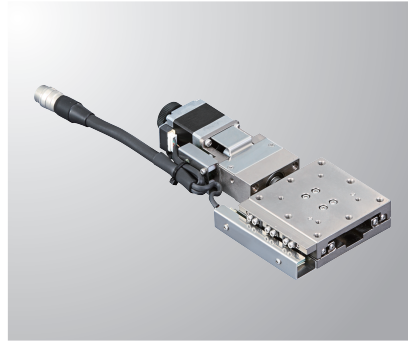


## X-axis Linear Ball Guide: PG413/PG513/PG615/PG715

PG615-L



PG615-R



RoHS

Model Selection code Option code

**PG 413-L05AG-C5**

1 2 3 4 5 6 7

● Cable P.1-207~  
● Electrical specification P.1-037~

### 1 Table size

4	<input type="checkbox"/> 40mm
5	<input type="checkbox"/> 50mm
6	<input type="checkbox"/> 60mm
7	<input type="checkbox"/> 70mm

\* Cannot choose 415, 515, 613, 713 in combination with 1 and 2.

### 2 Travel length

13	13mm
15	15mm

### 4 Sensor voltage

05	5V
24	24V

\* 05 [5V] for standard

### 5 Sensor logic

A	N.C.
B	N.O.
C	Limit sensor is N.C., ORG1 and ORG2 are N.O.

\* The sensor voltage/logic is different, but the external form dimension is the same.

\* If you choose 24V, not available our controller DS102/112.

### 7 Cable option

※ See page ● P.1-039~ for ORG2 compatible cable.

Code	Specification	Cable type
Blank	2m	D214-2-2E
1	2m One end loose	D214-2-2EK
2	4m	D214-2-4E
3	4m One end loose	D214-2-4EK
4	Only connector (Cable is not included)	—
5	Cable is not included (Standard)	—
6	Robot cable 2m	D214-2-2R
7	Robot cable 4m	D214-2-4R
8	Robot cable 4m one end loose	D214-2-4RK
9	Robot cable 2m one end loose	D214-2-2RK
M	Cable for electromagnetic brake	—
P	Cable for $\alpha$ step	
U	Cable for servo motor	

\* One end loose position to only stage opposite side.

\* The price includes M, P and U.

Not available non-cable.

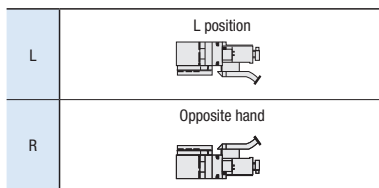
See page ● P.1-207,209~ for details of cable.

Please select "blank, 2, 6 and 7" when connect with stepping motor controller(DS102/112).

[Note]  
Please check available cable from compatibility list.

Motor/cable products list	Motor code	Cable code
	C, D, E	Blank, 1~9
	MA	M
	PA	P
U	U	

### 3 Sensor cover location



### 6 Motor option

Code	Specification
C	Standard
D	High-torque
E	High resolution
MA	With electromagnetic brake (Driver set)
PA	$\alpha$ Step (Driver set)
U	Servo motor (Amplifier set)

\* Code MA · PA · U is the set of driver and cable.

\* See page ● P.1-037~ for details of motor option.

SPEC					
Model	PG413-L05AG-C5	PG513-L05AG-C5	PG615-L05AG-C5	PG715-L05AG-C5	
(Opposite hand)	PG413-R05AG-C5	PG513-R05AG-C5	PG615-R05AG-C5	PG715-R05AG-C5	
Mechanical specification	Travel length	13mm		15mm	
	Table size	40×40mm	50×50mm	60×60mm	70×70mm
	Feed screw (Ball screw)	φ6 lead 1			
	Guide	Linear ball guide			
	Main materials-Finishing	Stainless—Opposite side of the end face finishing			
Weight	0.5kg	0.6kg	0.7kg	0.9kg	
Accuracy specification	Resolution (Pulse)	2μm (Full)/1μm (Half)			
	MAX speed	10mm/sec			
	Uni-directional positioning accuracy	Within 6μm			
	Repeatability positioning accuracy	Within ±0.5μm			
	Load capacity	10kgf [98N]			
	Moment stiffness	Pitch 0.22/yaw 0.17/ roll 0.12 ["/N · cm]	Pitch 0.14/yaw 0.10/ roll 0.06 ["/N · cm]	Pitch 0.08/yaw 0.07/ roll 0.03 ["/N · cm]	Pitch 0.03/yaw 0.03/ roll 0.01 ["/N · cm]
	Lost motion	Within 1μm			
	Backlash	Within 0.5μm			
	Straightness	Within 1μm			
	Parallelism	Within 15μm			
Motion parallelism	Within 5μm				
Pitching/Yawing	Within 15"/Within 10"				
Sensor	Limit sensor	Installed			
	Origin sensor (ORG1)	Installed			
	Slit origin sensor (ORG2)	Installed See page ● P.1-039~			
Provided screw (Hexagon-headed bolt)	4 of M3—8		4 of M4—8		

※ Might be changed specification due to motors. See page ● P.1-213~ for details.