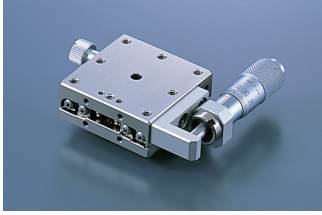
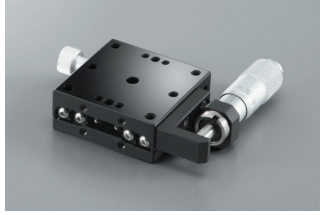


X-axis Linear Ball Guide (SS) Stage □40: BSS16-40/BSB16-40

BSS16-40C

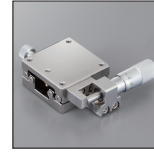


BSB16-40C



Low prices

Linear ball guide
BXT series



▶ P.2-015~

RoHS

Optional sample *The photo is for illustrative purpose only.

Please refer to optional introduction pages for details. ▶ P.2-009

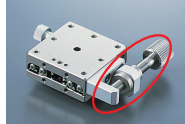
Precise positioning

Coarse-fine micro



Cost reduction

Feeding screw



Prevention error · Space-saving

Feeding screw hexagonal wrench operation



Reduce the reading time

Degimatic micro



Improve the fixing accuracy

Disk clamp



Improve the holding power

Opposite clamp



**Image is for □80.

1 Model

BSS16-40

BSB16-40CR

Option code



Select the option code as below.

	2 Feeding position		3 Operating position					4 Feeding type (Not available feeding position B/D when selecting)					5 Clamp type			6 Grease specification			
Specifier	Standard micro A	Coarse-fine micro B	Standard C	Opposite attached micrometer D	Vertically attached micrometer E	Up/Down-Left/Right opposite F	Standard micro (P=0.5mm) G	Feeding screw (Knob) (P=0.5mm) H	Feeding screw (Knob) (P=0.25mm) I	Feeding screw (Knob) (Hex wrench) (P=1.0mm) J	Feeding screw (Hex wrench) (P=0.5mm) K	Feeding screw (Hex wrench) (P=0.25mm) L	Degimatic micrometer M	Standard clamp N	Disk clamp O	Opposite clamp P	Standard grease Q	Clean environment grease AFF R	Grease for the vacuum FOMBLIN S
Code	A/C Center/Side	B/D Center/Side	Blank	R	Z	ZR	Blank	1	FP	LP	SH	FH	4	Blank	5	6	Blank	J	L

Ⓜ A color of the parts may be silver due to the option model.

SPEC

Model	BSS16-40A	BSS16-40AZ	BSS16-40C	BSS16-40CZ	BSB16-40A	BSB16-40AZ	BSB16-40C	BSB16-40CZ
(Opposite hand)	BSS16-40AR	BSS16-40AZR	BSS16-40CR	BSS16-40CZR	BSB16-40AR	BSB16-40AZR	BSB16-40CR	BSB16-40CZR
Stage table size	40×40mm							
Feeding position	Center		Side		Center		Side	
Travel distance	±6.5							
Minimum reading of micrometer	10μm							
Guide	Linear ball guide							
Load capacity	10kgf [98N]							
Travel accuracy	Straightness		Within 1μm				Within 3μm	
	Pitching				Within 25"			
	Yawing				Within 15"			
Allowable load for moment	Pitch		5.0N · m					
	Yaw		5.0N · m					
	Roll		5.0N · m					
Moment rigidity	Pitch		0.42"/N · cm					
	Yaw		0.35"/N · cm					
	Roll		0.21"/N · cm					
Parallelism	Within 15μm							
Motion parallelism	Within 7μm							
Weight	0.23kg							
Main material—Surface finishing	Stainless—Electroless nickel plating				Stainless—Low temperature black chrome plating			
Provided screws (Hex socket screws)	4 of M3—6							

X

XY

Z

Horizontal Z

XZ

Horizontal XZ

XYZ

Horizontal XYZ

Goniometer

Rotary

Unit

Accessories

Linear Ball

Cross Roller

Dovetail

□25

□30

□40

□50

□60

□70

□80

□100

□120

Other