

Feature Summary:

- 130mm of XY motion
- Loads to 5kg
- 65mm tall
- Encoder resolution to 0.1 micron
- Flatness to +/- 2.5 microns
- Orthogonality to 10 arc-sec
- 110mm aperture at center of travel
- 2D error mapping

Overview

Primatics POF65 open frame stages are designed for the most demanding applications. The POF65's low profile, large aperture design makes it ideal for applications such as: wafer inspection, scanning microscopy, and precision assembly.

Higher Performance

Open frame stages are most often used in applications requiring very accurate, flat motion. To achieve these requirements, the POF65 eliminates all empty space between the top and bottom of the positioner, minimizing the overall height & tolerance stack without sacrificing stiffness & load capacity. A finish cut after anodizing, in combination with precision linear guide bearings and 65mm of total height, ensures reduced abbe errors inherent to cross roller open frame designs.

Linear motor drive

The POF65 features a brushless linear motor and non-contact linear encoder, providing superior smoothness and accuracy. The linear motors are oversized to provide high acceleration and short step and settle times. Linear feedback to 0.1 micron resolution is standard, with an analog feedback also available as an option.

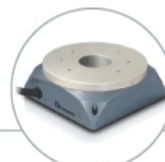
Designed for your Application

The POF65 has a 110mm aperture at the center of travel, allowing access to both sides of the customer load during operation. Recirculating linear guides provide a fully supported bearing structure, minimizing angular errors during motion. These bearings make the POF65 ideal for fast, repetitive operations. The linear guide bearings also exhibit exceptional stiffness and high load capacity.

Direct Drive Open Frame	POF65		
Travel (millimeters)	130 x 130		
Resolution (microns)	0.1	0.2	1.0
Accuracy , slope corrected (microns)	+/- 4		
Repeatability (microns)	+/- 0.5	+/- 0.7	+/- 2
Straightness (microns)	+/- 2.5		
Flatness (microns)	+/- 2.5		
Max Speed (mm/s)	600		
Direct Loading Capacity (kg)	5		
Orthogonality (arc-sec)	10		
Cleanroom Class	10,000		
Dimensions (mm)	65 mm T x 368 mm W x 407 mm D		
Weight (kg)	17		



Linear Positioning



Rotary Positioning



Motion Controls



OEM Solutions