

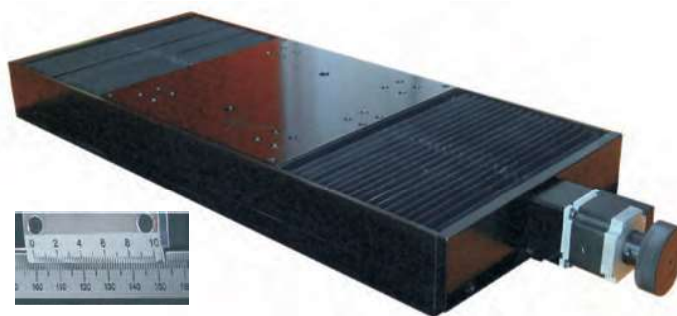
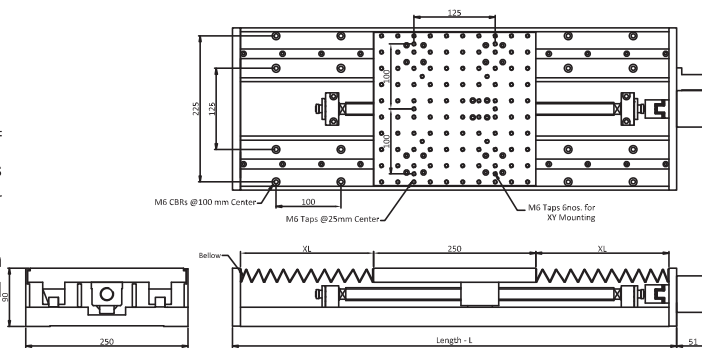
RCMTS-250 Series

Travel: 100 to 1000 mm
Carriage Size : 150mm x 150mm
Load Capacity :Up to 125 kg vertical

Carriages (load bearing surface of the stage which moves) of RCMTS-250 stages have 250 mm x 250 mm size. Standard models are available for up to 750 mm traverse. There are two linear guideways for each axis and these are re-circulating type with balls. Drive is by ball screw-stepper motor combination. Servo motors can also be made available for specific applications where speed requirements are not possible with steppers.

Z-axis: In these stages, in vertical configuration, if the load is more than 15 kgs, the carriage may come down under gravity when power to the motor is switched off. This is when ball screw is directly attached to the stepper motor. If the load to be lifted is more than 15 kgs, it is advisable to use our Z axis stages with a gear box (1:6 ratio) in between motor and ball screw. Though this reduces speed in Z axis, load capacity increases considerably. Please see the tables and chart below for details.

- ▶ Straight line Accuracy : 20-100 Micron
- ▶ Drive : Precision Lead screw
- ▶ Construction : Aluminium Alloy B51S, Black anodized Finish
- ▶ Tapped Holes on Carriage : M4 Tapped Holes
- ▶ Mounting Holes on the base : M6 Tap and M4 CBR
- ▶ Design : Modular Type -Multi axis



Engraved vernier scales are provided with all LTTs series translation stages.

Controller sold separately
please refer page 183

Drive Details



4 mm Pitch Ball screw With Gear Box Gear Ratio- 1:8

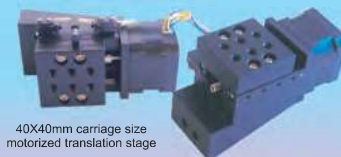
Positioning Accuracy : 0.05mm
Repeatability : 0.05mm
Resolution : 0.010 (in Micro Step Mode)
Speed : 5mm/sec (4RPS)

4mm Pitch Ball Screw

Positioning Accuracy : 0.05mm
Repeatability : 0.05mm
Resolution : 0.00125 (in Micro Step Mode)
Speed : 16mm/sec (4RPS)

4mm Pitch Ball screw	Load Capacity		4mm Pitch Ball screw With 1:8 Gear Box	Load Capacity	
	X Axis	Z Axis <small>(maximum holding weight at off condition)</small>		X Axis	Z Axis
Model No	Kg	Kg	Model No	Kg	Kg
RCMTS250-100-2	100	15	RCMTS250-100-F	150	120
RCMTS250-200-2	100	15	RCMTS250-200-F	150	120
RCMTS250-250-2	100	15	RCMTS250-250-F	150	120
RCMTS250-300-2	100	15	RCMTS250-300-F	150	115
RCMTS250-500-2	95	15	RCMTS250-500-F	140	110
RCMTS250-750-2	90	15	RCMTS250-750-F	135	105
RCMTS250-1000-2	90	15	RCMTS250-1000-F	135	100

Custom Miniature Motorized Positioners



40X40mm carriage size motorized translation stage

Customized as per the specifications given by clients. Vacuum compatible translation stages can be used in vacuum applications down to 10⁻⁴ Torr.

Contact us @
Ph.No: 91-484-2540075
Fax: 91-484-2540882
mail@holmarc.com

Travel	Length	Accessories		
		Vertical Bracket	Horizontal Bracket	Base Plate
100	410	VAB-RCMTS250-100		BP-RCMTS250-100
200	510	VAB-RCMTS250-200		BP-RCMTS250-250
250	560	VAB-RCMTS250-250	HAB-RCMTS-250	BP-RCMTS250-250
300	610	VAB-RCMTS250-300	Size : 250x250mm	BP-RCMTS250-300
500	920	VAB-RCMTS250-500		BP-RCMTS250-500
750	1170	VAB-RCMTS250-750		BP-RCMTS250-750
1000	1420	VAB-RCMTS250-1000		BP-RCMTS250-1000



◀ Angle Brackets :

It is used to transform horizontal translators to vertical ones. Horizontally fixed height platforms can be constructed by combining two angle brackets.



▶ Base plates :

Base plates can be used for mounting translation stages to breadboards and tables conveniently.