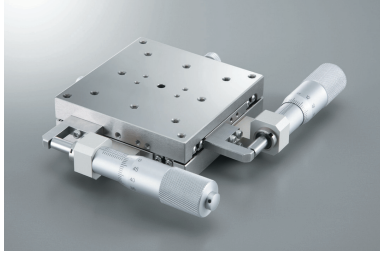


Manual Stage

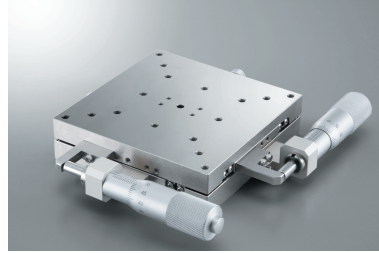
Thin Type XY-axis Linear Ball Guide (SS) Stage □80/□100: BSS23-80/100

Manual linear stage

BSS23-80C



BSS23-100C



[Features]

- X and Y-axis integrated structure stage.
- Reduce 14mm of thickness in comparison with XY-axis combination.

RoHS

Optional sample *The photo is for illustrative purpose only.
Please refer to optional introduction pages for details. [CP.2-009~](#)

Precise positioning
Coarse-fine micrometer

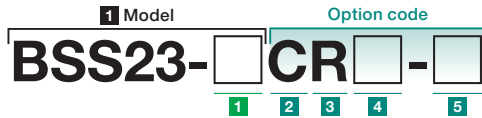


Image is for X-axis.

Cost reduction
Feeding screw



Image is for X-axis.



Select the option code as below.

1 Stage table size

80	80×80mm
100	100×100mm

	2 Feeding position		3 Operating position		4 Feeding type (Not available feeding position D when selecting)			5 Grease specification		
Specification	Standard micrometer A C	Coarse-fine micrometer D <i>Travel distance: ±5.5mm Minimum reading: 0.5µm</i>	Standard	Opposite attached micrometer	Standard micrometer (P=0.5mm)	Feeding screw (Knob) (P=0.5mm)	Feeding screw (Knob) (P=1.0mm)	Standard grease	Clean environment grease AFF	Grease for the vacuum FOMBLIN
Code	A/C Center/Side	D Side	Blank	R	Blank	TP	GP	Blank	J	L

Linear Ball

Cross Roller

Dovetail

□25

□30

□40

□50

□60

□70

□80

□100

□120

Other

SPEC

Model	BSS23-80A	BSS23-80C	BSS23-100A	BSS23-100C
(Opposite hand)	BSS23-80AR	BSS23-80CR	BSS23-100AR	BSS23-100CR
Stage table size	80×80mm		100×100mm	
Feeding position	Center	Side	Center	Side
Travel distance	±12.5mm			
Minimum reading of micrometer	10µm			
Guide	Linear ball guide			
Load capacity	26.1kgf [255.8N]		33.6kgf [329.3N]	
Travel accuracy	Straightness			
	Pitching			
	Yawing			
Allowable load for moment	Pitch		27.6N · m	
	Yaw		28.6N · m	
	Roll		27.6N · m	
	Pitch		0.06"/N · cm	
Moment rigidity	Yaw		0.03"/N · cm	
	Roll		0.06"/N · cm	
	Parallelism			
Motion parallelism	Within 40µm			
Weight	1.32kg		2.66kg	
Main material—Surface finishing	Stainless—Electroless nickel plating			
Provided screws (Hex socket screws)	4 of M4—10			