

Precision Rotation Stage | PR-50SM NEW

www.micronixusa.com | info@micronixusa.com | phone: +1 (949) 480 0538 | fax: +1 (949) 480 0538

The PR-50 rotary stage excels where fast rotation speeds are needed. The stage utilizes a direct drive stepper motor combined with dual mutually pre-loaded ball bearings, which allow for smooth, 360° travel. Vacuum versions are available. The PR-50 is compatible with the MMC-200.

KEY FEATURES

- Continuous 360° motion
- Load capacity up to 2 kg
- Mutually pre-loaded ball bearings
- Low profile, 34 mm height
- Vacuum versions available

TECHNICAL DATA

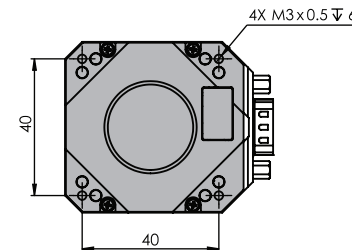
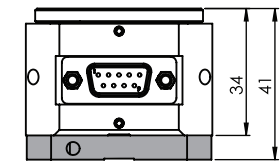
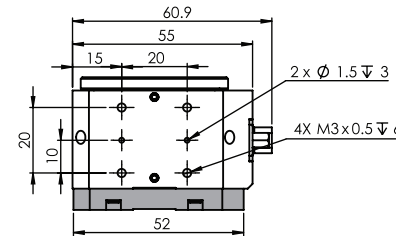
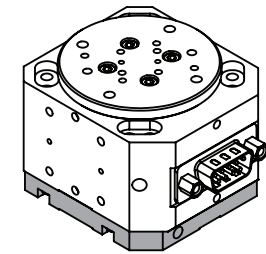
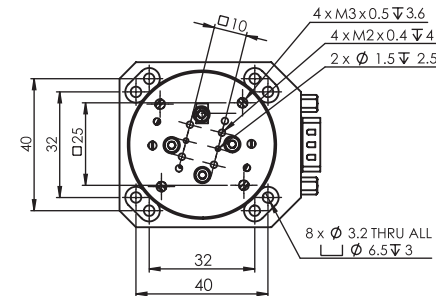
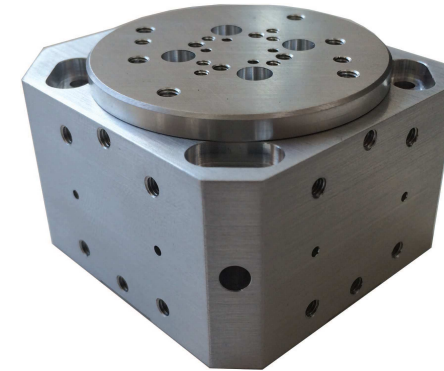
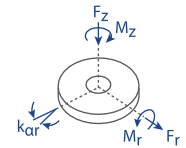
Travel range [°]	360°, limitless		
Flatness (bearings) [μm]	± 3		
Eccentricity (bearings) [μm]	± 3		
Wobble [μrad]	± 50		
Weight [g]	257		
Motor option	Direct Drive Stepper Motor		
Speed, max [°/s]	1800 (5 rev/sec)		
Encoder option	None (open loop)	Analog (1 V _{pp})	Digital (RS-422)
Resolution, typical [°]	0.01	0.005	0.005
Repeatability, bi-directional [°]	± 0.05	± 0.01	± 0.01
Repeatability, uni-directional [°]	0.05	0.01	0.01
Accuracy [°]	-	-	-
Materials	aluminum body, steel bearing (other materials i.e. stainless steel, titanium, etc. available upon request)		

ORDERING INFORMATION

	PR-50-	2	1			
DRIVE	Stepper Motor, SM-006.....	2				
TRAVEL	360°	1				
ENCODER	None	0				
	Analog (1 V _{pp})	2				
	Digital (RS-422)	3				
HOME SWITCH*	None	0				
	Magnetic	1				
ENVIRONMENT	Atmospheric	0				
	High Vacuum, 10 ⁻⁶ mbar	6				

* Only available in open loop

Load, max	F _r [N]	F _z [N]	M _r [N-m]	M _z [N-m]	k _{ar} [μrad/N-m]
SM-006	10	20	5	0.04	150



* all dimensions are in millimeter
* grey parts are for closed loop and home switch version only

Specifications are subject to change without notice.