

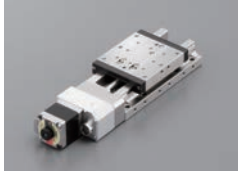
Motorized Stage

CAVE-X POSITIONER

X-axis Linear Ball Guide: KXL06030/KXL06050/KXL06075

Motorized Stage

KXL06030-N



KXL06050-N



KXL06075-N



KXL06030-C



KXL06050-C



KXL06075-C



See page P.009

The drive unit areas are coated in clean grease.

Model Selection code Option code

KXL06 030-N1-C

1 2 3 4 5 6

Cable P.1-207~
Electrical specification P.1-077~

1 Travel length

030	30mm
050	50mm
075	75mm

2 Cover type

N	Uncovered	
C	Covered	

3 Ball screw lead selection

1	Lead 1mm
2	Lead 2mm

4 Motor option

Code	Specification
C	Standard
F	High-torque
G	High resolution
MA	With electromagnetic brake (Driver set)
PA	α Step (Driver set)
U	Servo motor (Amplifier set)

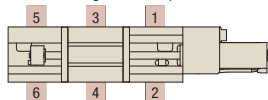
* Code MA · PA · U is the set of driver and cable.
* See page P.1-077~ for details of motor option.

5 Origin sensor option

Code	Specification
Blank	None
1	CCW right side
2	CCW left side
3	Center right side
4	Center left side
5	CW right side
6	CW left side

* See page P.1-079~ for details of origin sensor option.

Position of origin sensor option (Please choose one position)



6 Cable option

Code	Specification	Cable type
A	2m	D214-2-2E
B	2m One end loose	D214-2-2EK
C	4m	D214-2-4E
D	4m One end loose	D214-2-4EK
E	Only connector (Cable is not included)	—
F	Robot cable 2m	D214-2-2R
G	Robot cable 2m one end loose	D214-2-2RK
H	Robot cable 4m	D214-2-4R
J	Robot cable 4m one end loose	D214-2-4RK
M	Cable for electromagnetic brake	—
P	Cable for α step	—
U	Cable for servo motor	—
Blank	Cable is not included (Standard)	—

* One end loose position to only stage opposite side.

* The price includes M, P and U.

Not available non-cable.

* See page P.1-207,209~ for details of cable.

* Please select "Code A, C, F or H" when connect with stepping motor controller(DS102/112).

[Note]

Please check available cable from compatibility list.

Not included cable for a main body. Please choose the code as below.

Motor/cable products list	Motor code	Cable code
	C,F,G	Blank, A~H,J
MA	M	
PA	P	
U	U	

Linear Ball

CAVE-X Linear ball

Cross Roller

Slide Guide

φ40

φ50

φ60

φ70

φ80

φ100

φ120

Other

SPEC

Model	Uncovered	KXL06030-N1-C	KXL06030-N2-C	KXL06050-N1-C	KXL06050-N2-C	KXL06075-N1-C	KXL06075-N2-C
	Covered	KXL06030-C1-C	KXL06030-C2-C	KXL06050-C1-C	KXL06050-C2-C	KXL06075-C1-C	KXL06075-C2-C
Mechanical specification	Travel length	30mm		50mm		75mm	
	Table size	60×60mm					
	Feed screw (Ball screw)	φ8 lead 1	φ8 lead 2	φ8 lead 1	φ8 lead 2	φ8 lead 1	φ8 lead 2
	Guide	Linear ball guide					
Main materials-Finishing	Stainless—Opposite side of the end face finishing						
	Weight	Uncovered	1.28kg		1.40kg		1.54kg
		Covered	1.34kg		1.44kg		1.60kg
Resolution (Pulse)	Full/ Half	2μm/1μm	4μm/2μm	2μm/1μm	4μm/2μm	2μm/1μm	4μm/2μm
	Microstep	0.1μm (1/20 on resolution)	0.2μm (1/20 on resolution)	0.1μm (1/20 on resolution)	0.2μm (1/20 on resolution)	0.1μm (1/20 on resolution)	0.2μm (1/20 on resolution)
MAX speed		30mm/sec	35mm/sec	30mm/sec	35mm/sec	30mm/sec	35mm/sec
Accuracy specification	Uni-directional positioning accuracy	Within 5μm				Within 7μm	
	Repeatability positioning accuracy	Within ±0.5μm					
	Load capacity	12kgf [117.6N]					
	Moment stiffness	Pitch 0.05/yaw 0.05/roll 0.05 ["/N · cm]					
	Lost motion	Within 1μm					
	Backlash	Within 1μm					
	Straightness	Within 3μm					
Sensor	Parallelism	Within 15μm					
	Motion parallelism	Within 10μm					
	Pitching/Yawing	2Within 0"/Within 15"					
	Limit sensor	Installed					
Origin sensor	— ※Attachable in the origin sensor option						
Slit origin sensor	—						
Provided screw (Hexagon-headed bolt)	8 of M4—14						

※ Might be changed specification due to motors. See page P.1-213~ for details.