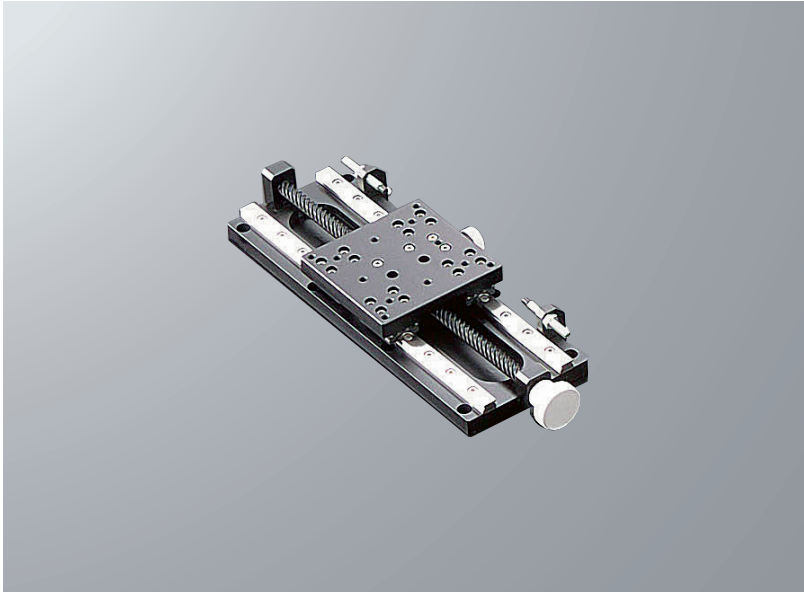


## X-axis Long Stroke Slide Guide Stage □80: B15-150

Manual linear stage

RoHS

B15-150



- Long stroke stage.
- Optimal control system for heavy weight, big size and optical system.
- Adjustable travel distance by changing a stopper position on the side.

X

XY

Z

Horizontal Z

XZ

Horizontal XZ

XYZ

Horizontal XYZ

Goniometer

Rotary

Unit

Accessories

Linear Ball

Cross Roller

Dovetail

□25

□30

□40

□50

□60

□70

□80

□100

□120

Other

### SPEC

		B15-150
<b>Model</b>		<b>B15-150</b>
<b>(Opposite hand)</b>		<b>B15-150R</b>
Stage table size		80×80mm
Travel distance		128mm
Travel distance per rotation of knob		24mm
Guide		Slide guide
Load capacity		15kgf [147N]
Travel accuracy	Straightness	—
Allowable load for moment	Pitch	10.6N · m
	Yaw	7.5N · m
	Roll	11.5N · m
Parallelism		50μm
Motion parallelism		25μm
Weight		0.9kg
Main material—Surface finishing		Aluminum—Black alumite processing
Provided screws (Hex socket screws)		8 of M4—10